

ELWOOD PRIMARY SCHOOL



PREP 2024





ACKNOWLEDGMENT OF COUNTRY

We would like to acknowledge the Traditional Owners of the land of which we are gathered today, the Bunurong people of the South-Eastern Kulin Nation. We pay our respects to their Elders past, present and we acknowledge and respect their continuing relationship to the land on which we meet.

SCHOOL AMBASSADORS

MOLLY ISSY SOPHIE
AVA SAFFY CALLUM LILY BEN
ANNABELLE



INTRODUCING OUR CURRENT TEAM

Prep Teachers

Christine Lomp
Jake Hemphill
Georgia Fitzpatrick
Anna Morris

Front Office

Jo Sawdon, Rebecca Burt, Kez Stubbs
& Simon Horner



Principal
Nicole Richards

Assistant Principals
Rosie Grosso - P - 2
Ariana Peters - 3 - 6
Jay Tucker - 3 - 6

Teaching & Learning Coach
Sara Walsh



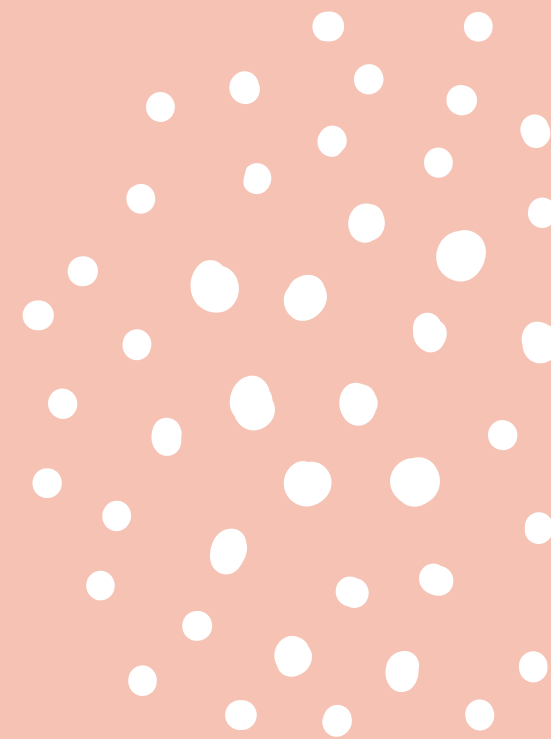
2024 – 2030

Over the next 7 years you will see, feel & know a school that:

- Focuses on the development of the whole child
- A school that reflects the values of its community
- A personalised curriculum with an emphasis on literacy and numeracy
- A true partnership that values each family
- A school that involves the community in learning
- Joy in all we do



SCHOOL TONE



We are and will continue to be:

Welcoming, friendly & fun
Relational
Inclusive
Dynamic and vibrant
Celebratory



OUR TEACHERS

Our teachers are professional, committed and make a huge difference to each students' learning and wellbeing.



OUR STUDENTS

Personalised & have voice / High Standards / Choice



TEAM KIDS

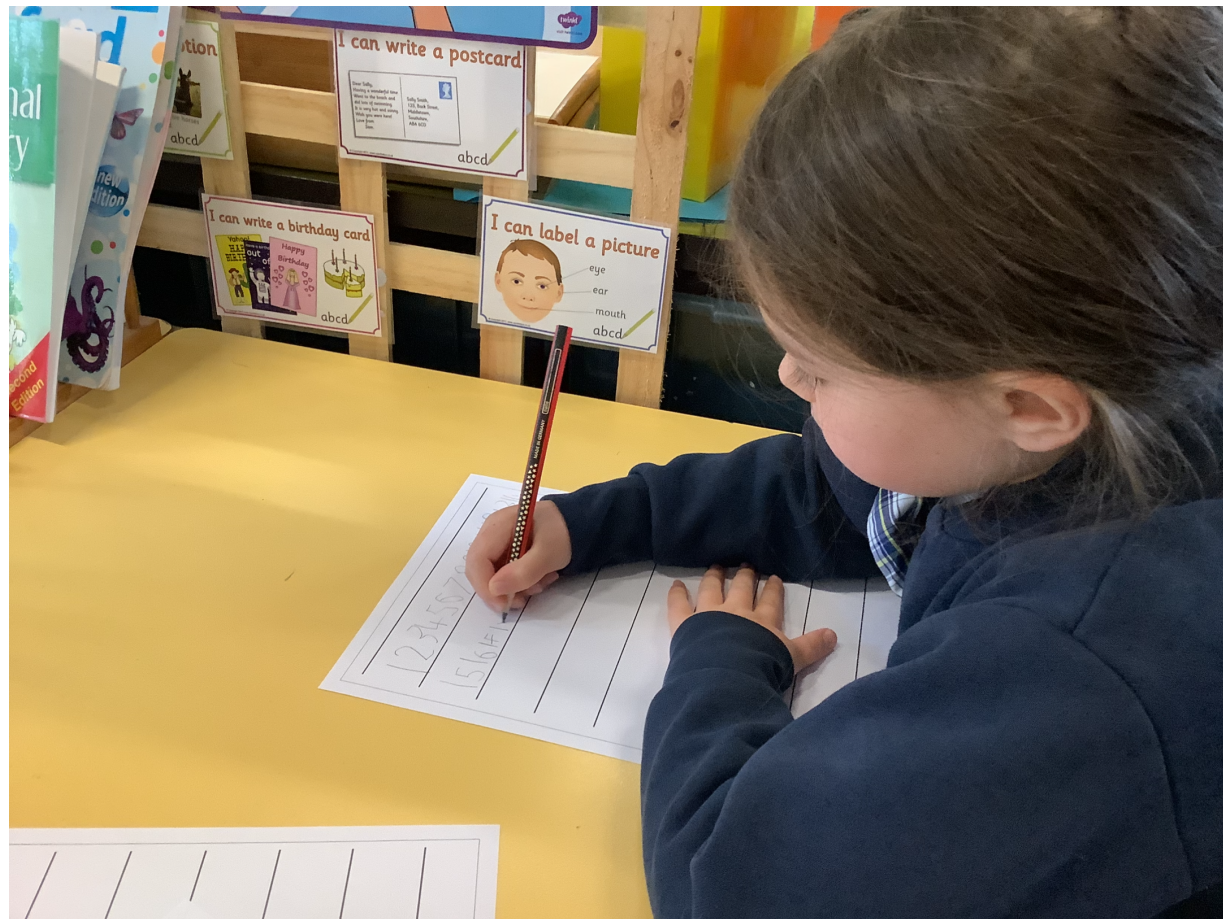


Before and after
school and holiday
program



A SNAPSHOT OF EPS

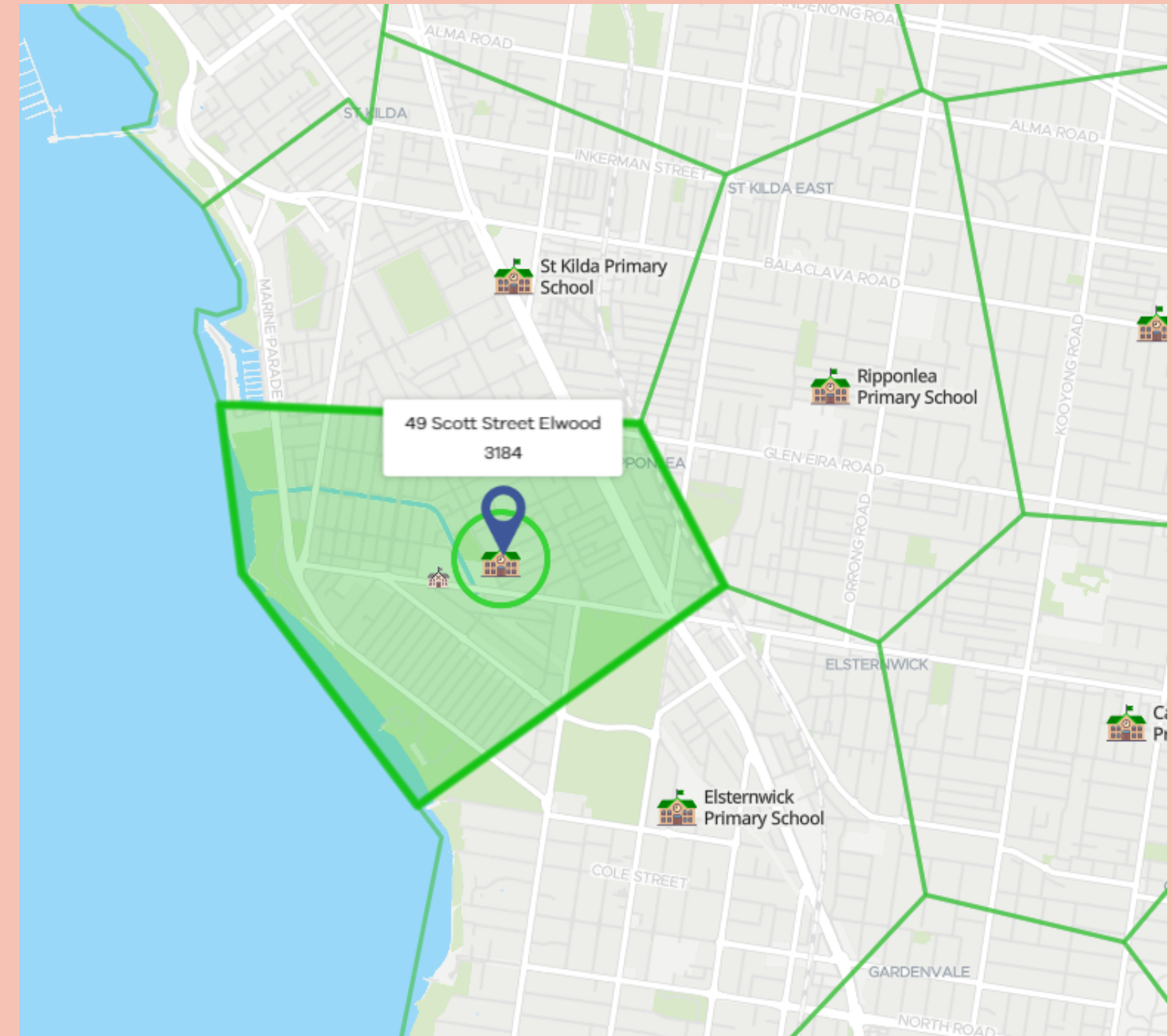
A Day in Prep!



What makes Elwood PS unique?



Enrolment and timelines



***GUARANTEED ENTRY FOR DESIGNATED SCHOOL**

***PRIORITY ORDER (SUBJECT TO SUFFICIENT ACCOMMODATION)**

1. SIBLINGS IN SAME PERMANENT ADDRESS
2. ALL OTHER IN ORDER OF CLOSENESS FROM THEIR HOME

NEW ENROLMENT FORMS & POLICY



Application to Enrol in a Victorian Government School

Enter school name here

This form has been designed to support students to apply for a place at a Victorian Government School. If a student is offered a place at a school, a School Enrolment Form, with attached supporting documentation, may need to be completed to finalise enrolment.

Your child's right to enrolment

Your child is guaranteed a place at the school they are zoned for, as shown on the Find My School website.

This means that if your child lives within the school zone, they must be offered a place when seeking enrolment. To find the school you are zoned for (referred to as your local school) visit www.findmyschool.vic.gov.au

Going to a school outside your zone

You have the choice to seek enrolment at a school that is not your local school. Your child should be offered a place if the school has sufficient accommodation.

If the school has limited accommodation, applications are considered using the priority order of placement. The priority order of placement prioritises out-of-zone siblings and then students in order of closeness of their home to the school.

In exceptional circumstances, a student may be enrolled in a school based on compassionate grounds. Family and student privacy will be maintained when considering applications on compassionate grounds.

To find out more, visit www.vic.gov.au/how-choose-school-and-enrol

Student tests and interviews

Enrolment offers are not dependent on a satisfactory report or interview. Student tests or interviews may only occur after an enrolment offer has been accepted.

Students with disability

Every student has the right to attend their local school. Students with disability have the same right to enrol in their local school as students without disability.

All schools must make [reasonable adjustments](#) so that students with disability can learn and achieve on the same basis as students without disability.

You also have the option to seek enrolment for your child at a government specialist school for students with disability.

International students

Fee-paying international students should apply through the Victorian Student Program at www.study.vic.gov.au

STUDENT DETAILS

Surname: _____

First Given Name: _____

Form to Enrol in a Victorian Government School

Enter school name and campus (if applicable) here

STUDENT ENROLMENT INFORMATION - 20____ OFFICE USE ONLY CASES21 Student ID: _____

The information requested in this form is required for enrolment purposes. This information is collected to plan for and support the educational needs of students.

This form should be completed by parents or carers who are responsible for enrolling their child. It is the responsibility of the person completing this form to consult with all other adults that need to be involved in the enrolment process. Parents or carers can co-sign the same form or complete separate forms if personal details are unable to be shared between them.

*required information is not provided or there is a dispute between parents or carers about a child's enrolment, the enrolling principal is required to consider the student's education and wellbeing when deciding whether to defer or accept the enrolment.

One enrolment form should be submitted per student. By completing and submitting this enrolment form, you are giving a place for your child at the specified school (subject to any further checks required by the school).

Parents across Australia are expected to collect the same information. Questions marked with a ♦ are asked as a part of the Commonwealth Government to meet data collection, funding and reporting requirements under the Education Regulations 2013.

STUDENT DETAILS

Age: _____

Gender: (if applicable) ☐ Male ☐ Female ☐ Self-described: _____

Student Mobile Number: (if applicable) _____

When to enrol this student? ☐ 3 ☐ 4 ☐ 5 ☐ 6 ☐ 7 ☐ 8 ☐ 9 ☐ 10 ☐ 11 ☐ 12 ☐ Ungraded

☐ Other: (dd-mm-yyyy) ____ / ____ / ____

Enrol this student full-time? ☐ Yes (move to next section) ☐ No

Student be attending this school? _____

- *28th July – applications to be submitted
- *11th August – EPS notify you of outcome
- *25th August – indicate your acceptance

25th August – written appeals to be lodged

15th Sept – EPS notification of appeal

20th Oct – appeals to the Regional Director

17th Nov – notification of appeal from Director

TIMELINES

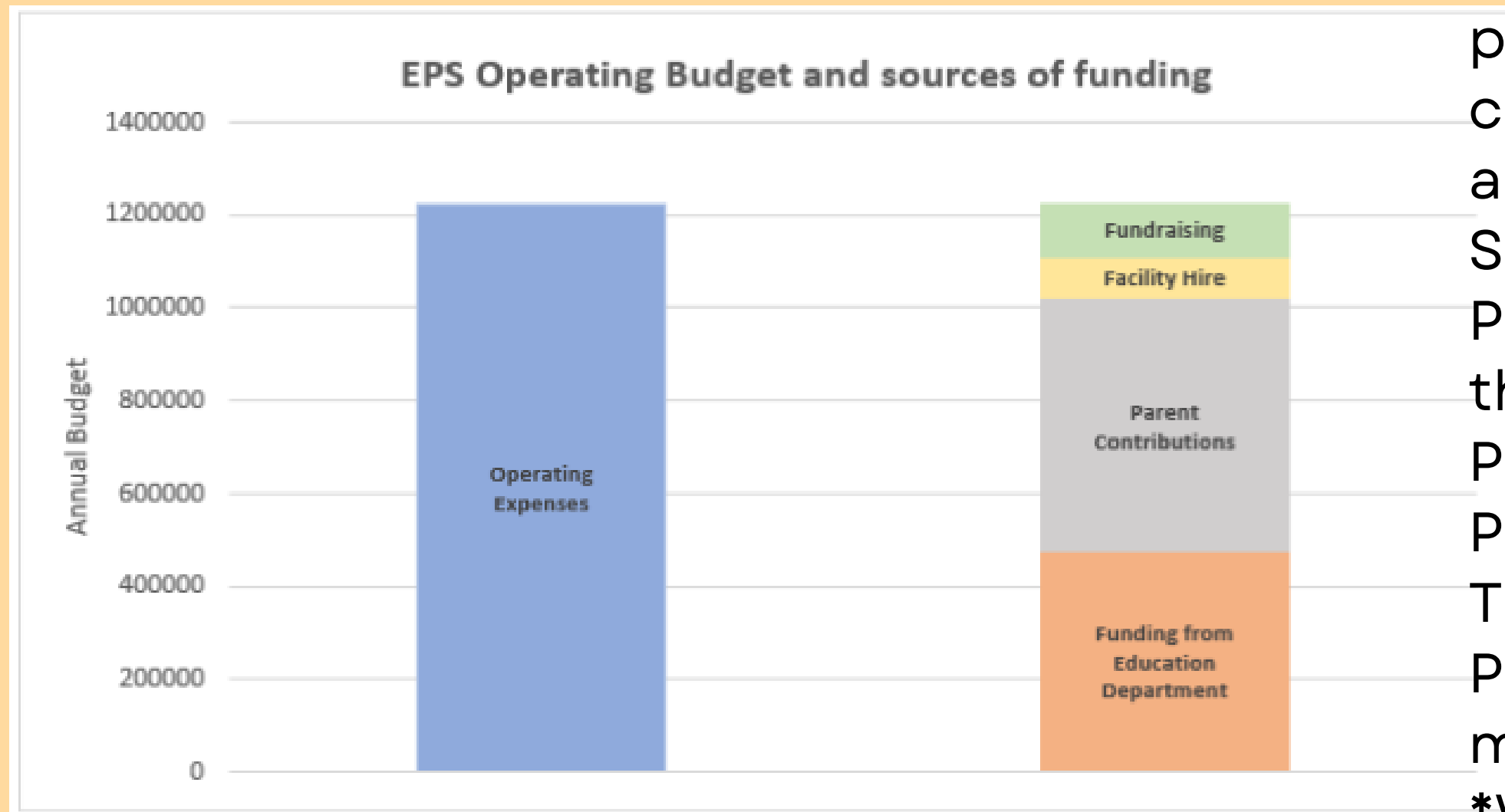


*BEYOND THE STANDARD EDUCATION

*XUNO OR THE OFFICE

*TERM BY TERM OR YEAR





***ANNUAL OPERATING
EXPENSES OF AROUND
\$1.2MILLION
*\$470,000 FROM
GOVERNMENT FUNDING**

a shortfall of \$750,000 for books, iPads, pencils, bills, playgrounds, excursions, cleaning, utilities, calculators, incursions, art and craft supplies, produce for the Stephanie Alexander Kitchen Garden Program, buses to sport, laptops and all the things that make EPS amazing - The POD, Whole School Productions at the Palais and Art Shows, Learning and Teaching Coaches, our own Speech Pathologist and School Counsellor and more.....

*We anticipate needing parent contributions of about \$550,000 for us to have sufficient funds

*\$1000 per child for the year OR around \$290 a term

OR \$6 per school day per child!

PARENT PARTNERSHIP

2 reps per class

Help in the classroom

Other information



Grade 5 visits with Poet's Grove

School Tours - Tuesday and Wednesday morning - 9.15 - 10.30am



TRANSITION PROGRAM



READY SET GO

Term 2

May 19

June 16

Term 3

July 21

September 1

Term 4

October 20

November 17



Transition Session-
December 12 - 11:30-12:30



THANK YOU



Make
Today
Amazing